

CANCER *talk*

CONNECTING WITH MANITOBA'S PRIMARY CARE PROVIDERS

UPwords

› NETWORK NEWS FOR PRIMARY CARE PROVIDERS

NEW RADIATION THERAPY PATIENT EDUCATION VIDEO SERIES

Important Information for Healthcare Providers

We are excited to introduce a new patient education video series entitled [A Guided Journey: Understanding Radiation Therapy in Cancer Treatment](#). The video series is approximately 35 minutes long and provides valuable insights into the steps of the radiation treatment journey.

Dive in and empower yourself to assist patients undergoing radiation therapy. We believe that your investment of time in understanding these videos will empower you to provide elevated support and information to patients undergoing radiation therapy, and we look forward to the positive impact these videos will have on our shared commitment to outstanding patient care.

CANCER SCREENING UPDATES

- Access to cancer screening
- Results and follow-up
- Receive screening updates

View page 4 for more.

EARLY PALLIATIVE CARE IN HEPATOCELLULAR CARCINOMA

Improving quality of life alongside standard treatment.

Read more on page 6.

PROFESSIONAL DEVELOPMENT AWARDS

Applications are open until April 12, 2024

Check out page 9 for details.

If you have questions regarding the work-up of suspected cancer or any other cancer-related questions, please contact the CancerQuestion Helpline for Healthcare Professionals, Monday to Friday 8:30 a.m. to 4:30 p.m. Call (204) 226-2262.

Message from the President and CEO



STRENGTHENING THE BODY AND MIND

Dr. Sri Navaratnam, PRESIDENT & CEO, CANCERCARE MANITOBA

Every year, more than 7,000 Manitobans hear the words “You have cancer”. Hearing these words is understandably highly emotional and, in a moment, lives are forever changed.

CancerCare Manitoba is committed to providing high-quality, evidence-based, equitable cancer treatment to all Manitobans. But this is not the complete picture of comprehensive care that Manitobans deserve. Research shows that when we surround patients with supportive care to strengthen the body and mind throughout the cancer experience, the outcome is improved. Patients and caregivers have echoed the research by telling us what they need for fully comprehensive care and support. Without support, the cancer experience can be very challenging.

Primary care providers play a key role in supporting patients through the cancer experience. You are there when the diagnosis is made and the devastating news is delivered. You assist patients in navigating the cancer pathway, answering many questions, and offering support. You continue to see and support patients once they are in the cancer system and receiving treatment. We are so grateful for the strong support of the primary care community to individuals with cancer and to CancerCare Manitoba.

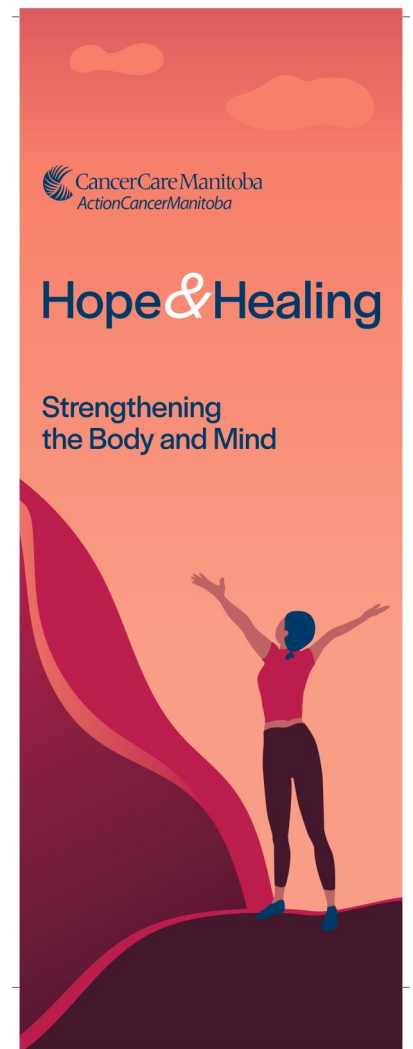
For many years, CancerCare Manitoba has provided supportive care through the Department of Psychosocial Oncology, the Patient & Family Resource Centre, the Breast Cancer Centre of Hope and the Adolescent & Young Adult (AYA) Program, offering hope to patients through counselling, peer support, nutrition services, and art therapy to name a very few of the services offered.

We are advancing our vision to bring together all support programs under one umbrella of the Hope & Healing

Program to strengthen the body and mind. Our objective is to expand and enhance support services so patients with all cancers throughout our province can access programs. Our goal is that a life with cancer is a life well lived.

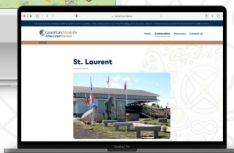
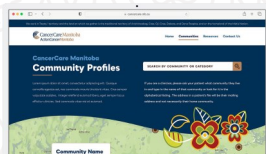
The Hope & Healing Program will be delivered in person and virtually through CCMB’s Centres for Hope in Winnipeg and outside our perimeter. We are so grateful for CCMB’s Paul Albrechtsen Centre for Hope at the Western Manitoba Cancer Centre in Brandon, the first Centre for Hope outside Winnipeg.

Our current vision is big and we are beginning to bring it to life. We are confident that by working together with all our partners, including the primary care community, the future will be strong and bright for all Manitobans.



Community Profiles

First Nations • Métis • Inuit



CancerCare Manitoba, in partnership with First Nation, Métis, and Inuit communities, has launched an innovative website to help healthcare professionals create safer and more comprehensive care plans for patients returning to their communities. The Indigenous Community Profiles website is a valuable resource that provides geographical and travel information, as well as details on healthcare and community resources in Indigenous communities.

Visit ccmbindigenouscommunityprofiles.ca



UPDATES FROM THE CANCERCARE MANITOBA SCREENING PROGRAMS

Access to Cancer Screening Programs for Manitobans

CancerCare Manitoba's Screening Programs encourage eligible Manitobans to take part in breast, cervix, and colorectal cancer screening.

BreastCheck

Individuals aged 50 and above are welcome to contact BreastCheck at 1-855-952-4325 to schedule a screening mammogram appointment at any of our six clinic locations. No referral is necessary. If a client is unable to arrange their own appointment, their healthcare provider can complete a [BreastCheck Appointment Form](#) with the client's consent.

For clients aged 50-74 with breast implants, screening must occur at a diagnostic imaging site. This process involves submitting a requisition using the [Manitoba Provincial Breast Imaging Consultation Request](#) form. Referrals for breast cancer screening sent to a diagnostic site for clients over 50 without breast implants will be declined by the diagnostic site and returned to the provider.

CervixCheck

Individuals with cervixes are encouraged to participate in cervical cancer screening by scheduling a Pap test appointment with a healthcare provider. CervixCheck oversees Pap testing participation and sends reminder letters to clients who are overdue for screening.

If someone with a cervix is not registered as female with Manitoba Health, they won't receive monitoring or correspondence until they have received a Pap test. It is important for healthcare providers to actively promote cervical cancer screening among eligible individuals. Clients can locate a Pap test provider by visiting the [CervixCheck website](#). No referral is necessary.

ColonCheck

ColonCheck distributes all fecal immunochemical tests (FIT) across the province. When Manitobans reach the age of 50, ColonCheck automatically sends them FIT invitations. Healthcare providers can request FITs for their patients who are under unscreened or under screened by using the ColonCheck FIT requisition form. Individuals can also request a FIT by visiting the [ColonCheck website](#). No referral is necessary.

Results and Follow-Up

BreastCheck

Within two weeks of a BreastCheck mammogram, healthcare providers receive a report from BreastCheck. This report includes the screening mammogram result, the client's breast density category, and, if applicable, details about the next test following an abnormal result. Initial follow-up testing is coordinated by BreastCheck. Clients with abnormal screening results are contacted with their results and information about the follow-up testing. Additionally, all clients receive a result letter by mail, regardless of their breast cancer screening outcome.

Continued...



BreastCheck Supporting Resources:

[BreastCheck Screening Guidelines](#)

[BreastCheck for Healthcare Providers – Results and Follow-Up](#)

[BreastCheck Results: Patient Discussion Guide](#)

Manitoba Provincial Breast Imaging Consultation Request Form

CervixCheck

When individuals undergo cervical cancer tests (such as Pap tests or high-risk human papillomavirus (hrHPV) tests), the results are communicated to their healthcare provider by the analyzing laboratory. CervixCheck plays a crucial role in ensuring the timely follow-up for those with specific test results.

Fail-Safe Letters: CervixCheck directly sends fail-safe letters to clients. These letters encourage clients to contact their healthcare provider if they receive any of the following results:

High-grade cytology
Positive hrHPV
Cancer

Monitoring Follow-Up: CervixCheck actively monitors follow-up procedures, including repeat Pap testing and colposcopy. The goal is to ensure that follow-up occurs promptly. If no follow-up is observed after six months, CervixCheck notifies the healthcare provider. If there is still no result in the registry within the subsequent three months, CervixCheck sends a letter directly to the individual.

CervixCheck Supporting Resources:

[CervixCheck Screening Guidelines](#)

[Cervical Cancer Screening Test Results](#)

[Cervical Cancer Screening Learning Module for Health Care Providers - Chapter 10](#)

[Colposcopy Services in Manitoba](#)

ColonCheck

All fecal immunochemical test (FIT) samples undergo analysis at the Cadham Provincial Laboratory. Test results are reported to ColonCheck and the client's healthcare provider. Normal results are communicated by mail within 2 weeks, while abnormal results are conveyed by phone and letter within 3 days.

Starting May 23, 2024, CancerCare Manitoba's ColonCheck FIT results, performed by Cadham Provincial Laboratory, will be available in eChart Manitoba. These results will appear in the Labs: Biochemistry section. For further details, refer to the [eChart Manitoba memo](#).

ColonCheck takes responsibility for managing follow-up testing, including assessing patients for direct scope referrals, providing education on colonoscopy preparation, and advising on procedure expectations. ColonCheck also submits referrals to endoscopy intake offices.

ColonCheck Supporting Resources:

[ColonCheck Screening Guidelines](#)

[ColonCheck for Healthcare Providers - Results and Follow-Up](#)

Colonoscopy: [English](#) | [French](#)

Bowel Prep: [English](#) | [French](#)

To receive updates from CancerCare Manitoba Screening Programs, [sign up for e-news](#).



MAIN ARTICLE PLACEHOLDER

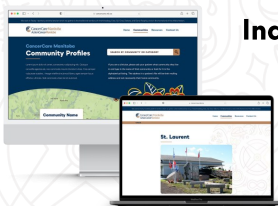
Name, TITLE PLACEHOLDER

Continued...



Community Profiles

First Nations • Métis • Inuit



Indigenous Community Profiles – Community Highlight:

[Arviat](#), situated in the Kivalliq Region and predominantly inhabited by Inuit people, lies north of Winnipeg. Daily flights to Arviat operate via Rankin Inlet. The primary language spoken is Inuktitut. Kivalliq Inuit Services (KIS), based in Winnipeg, provides Inuktitut interpreters and nursing coordinators who can assist in care planning. For more information, call 204-989-1020.

COMMUNITY ONCOLOGY ROUNDS AND CASES IN CANCER VIDEOS NOW AVAILABLE ONLINE!

We're excited to share that the Community Oncology Rounds and Cases in Cancer videos are now accessible online. These valuable resources provide insights into the latest developments in oncology, featuring expert discussions, case reviews, and multidisciplinary perspectives.

Whether you're a healthcare professional, researcher, or simply interested in cancer care, these videos offer a behind-the-scenes look at how doctors collaborate, analyze cases, and share expertise in bladder and upper tract cancers. You can find these videos on the CancerCare Manitoba website here.

Stay informed and enhance your knowledge with these educational sessions. Don't miss out - explore the videos today!

[Click here](#)

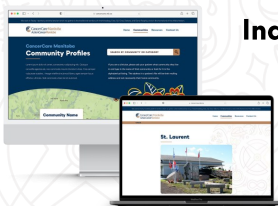
Community Profiles

First Nations • Métis • Inuit



Indigenous Community Profiles - Community Highlight:

[Fox Lake Cree Nation](#) is approximately 1000 km north of Winnipeg and predominantly speaks Cree. For medical services, the nearest Community Cancer Centre is in Thompson, and the closest radiation facility is in Winnipeg. For more information, call 1-855-740-9322.





CANCER SCREENING AND CERVIXCHECK COMPETENCY TRAINING

The CancerCare Manitoba Screening Programs host training for healthcare providers (e.g. nurses, nurse practitioners, physicians, midwives, physician assistants, and clinical assistants) in Manitoba seeking to:

- Initiate learning about cancer screening,
- Initiate or refresh learning and competency in [cervical cancer screening](#) or
- Mentor colleagues to become competent in screening for cervical cancer.

Training occurs over two days and approximately four times each year. To be notified of open registration for each training, register on the waitlist. Those on the waitlist are invited to register before the registration is open to all other clinicians. The training is only open to all other clinicians if space is available. Questions? Screening@cancercare.mb.ca

Staff Announcements



@CancerCareMB



@CancerCareMB

www.cancercare.mb.ca